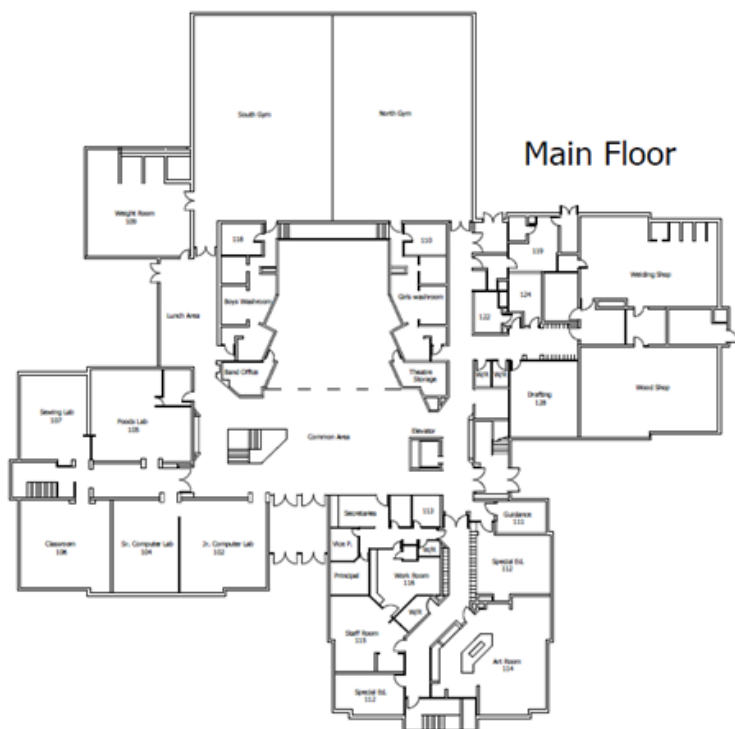
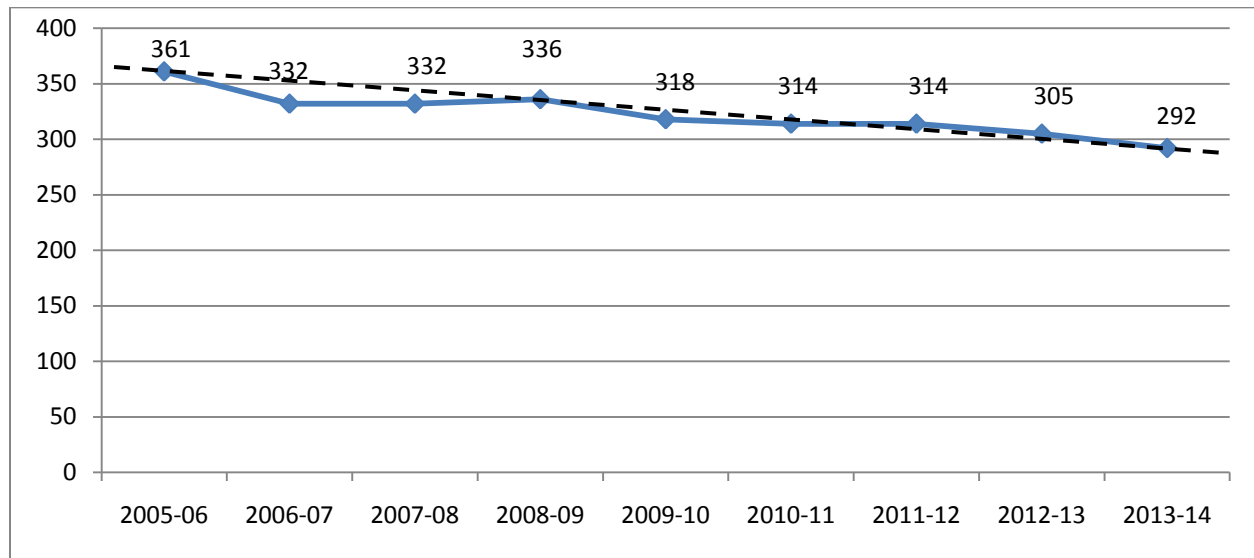


Rosetown Central High School

Rosetown Central High School (RCHS) is located in the town of Rosetown, which is 114 kilometres south west of Saskatoon on the junction of Highways 4 and 7. With a population of 2,277, Rosetown is one of the largest economic, recreation and service centres in the West Central Saskatchewan. Agriculture is the primary industry in the area and Rosetown provides government, health, education, social services, commercial operations, cultural, recreation services for the area. Service sector employment and highway traffic all make significant contributions to the local economy. Rosetown is served by a weekly newspaper. RCHS offers Grades 7 to 12 classes and has a current enrollment of 318 students. Projections indicate enrollment is declining. RCHS's attendance area includes the communities of D'Arcy, Fiske, McGee, Milden, Sovereign and Zealandia. The nearest school offering the same grades is Elrose Composite School. RCHS was built in 1987 and is the only school in the Division with two floors.

Enrollment and Projections



Second Floor

